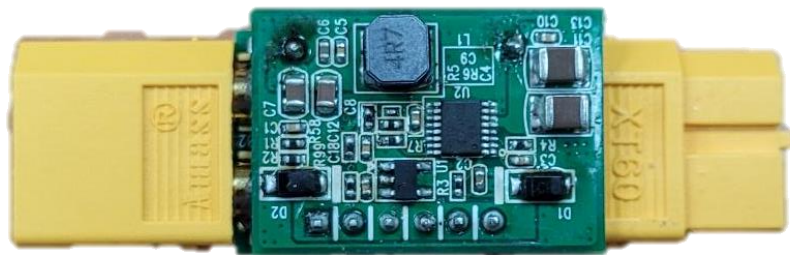


PW-XT60

Power Distribution Board

User Manual



rev: 260320
Made in Taiwan

INTRODUCTION

The **PW-XT60 Power Distribution Board** is a high-reliability integrated power module for drones and autonomous systems. It provides a stable 5.2 V regulated output for Pixhawk/Cube-class flight controllers and integrates voltage and current sensing (POWER-port compatible) for real-time battery monitoring—supporting safer, more efficient flights.

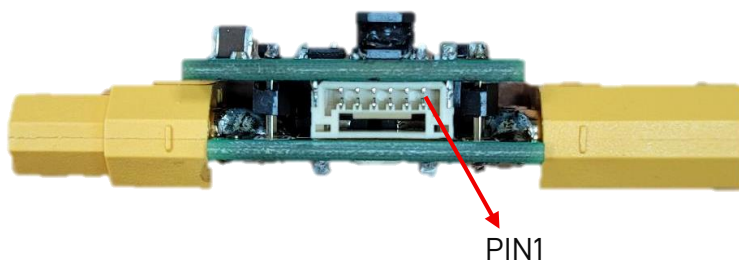
FEATURES

- Fully compatible with CubePilot Power Brick Mini protocols and interfaces; directly connects to POWER1 / POWER2 ports on the flight controller
- Input Voltage: 3S – 8S
- Output Voltage / Current: 5.2V / 2.5A
- Continuous Bus Current: 30 A
- XT60 connectors
- Weight: 16g
- Dimensions: 58.4mmx20mmx18mm

PACKAGE CONTENTS

- 1x PW-XT60
- 1x Power Cable

PIN DESCRIPTION



Pin #	Name
1	VCC / +5.2V
2	VCC / +5.2V
3	Current Sensing
4	Voltage Sensing
5	GND
6	GND

WARRANTY

The SELLER warrants the **PW-XT60 Power Distribution Board** to be free from defects in the material and workmanship for 1 year from the date of purchase from the SELLER or an authorized dealer. Should this product fail to be in good working order within 1 year warranty period, The SELLER, at its option, repair or replace the unit, provided that the unit has not been subjected to accident, disaster, abuse or any unauthorized modifications including static discharge and power surges.

Unit that fails under conditions other than those covered will be repaired at the current price of parts and labor in effect at the time of repair. Such repairs are warranted for 90 days from the day of reshipment to the BUYER. If the unit is delivered by mail, customers agree to insure the unit or assume the risk of loss or damage in transit. Under no circumstances will a unit be accepted without a return authorization number.

The warranty is in lieu of all other warranties expressed or implied, including without limitations, any other implied warranty or fitness or merchantability for any particular purpose, all of which are expressly disclaimed.

Proof of sale may be required in order to claim warranty. Customers outside Taiwan are responsible for shipping charges to and from the SELLER. Cables are limited to a 30 day warranty and cable must be free from any markings, scratches, and neatly coiled.

The content of this manual has been carefully checked and is believed to be accurate. However, The SELLER assumes no responsibility for any inaccuracies that may be contained in this manual. The SELLER will NOT be liable for direct, indirect, incidental, special, or consequential damages resulting from any defect or omission in this manual, even if advised of the possibility of such damages. **Also, the technical information contained herein regarding the PW-XT60 features and specifications is subject to change without further notice.**